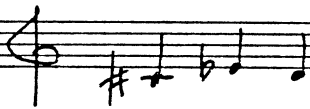


FORME

5 Stücke für Klavier

von

Sifan Wolke
(1986)



Toccata I

♩ = 100

ff
Ped

Ped

Ped

Ped

Ped

System 1: Treble clef with sixteenth-note patterns. Bass clef with chords and accidentals (b, #, 8). Pedal markings: * Ped, Ped Ped Ped.

System 2: Treble clef with sixteenth-note patterns. Bass clef with chords and accidentals (b, #, 8). Pedal markings: Ped Ped Ped Ped.

System 3: Treble clef with sixteenth-note patterns. Bass clef with chords and accidentals (b, #, 8). Pedal markings: Ped Ped Ped Ped.

System 4: Treble clef with sixteenth-note patterns. Bass clef with chords and accidentals (b, #, 8). Pedal markings: Ped * Ped Ped * Ped *.

System 5: Treble clef with sixteenth-note patterns. Bass clef with chords and accidentals (b, #, 8). Pedal markings: Ped Ped Ped. Dynamic marking: fff. Pedal marking: *.

1'30"

Juvenescere

42269

(con Ped.)

31

poco rit. 4/4 allargando

Ped Ped Ped Ped *

a tempo accel.

Ped * Ped *

50'

Passacaglia

4/4 2/6

pp
cresc.
Ped
* (con Ped)

(cresc.)
3
8

(cresc.)
5
3
3

(cresc.)
3
3
Ped
Ped
cresc.

3
3
3
3
8

Handwritten musical score for the first system. The treble clef staff contains a melodic line with various rhythmic values and triplets. The bass clef staff provides harmonic accompaniment with chords and bass notes. A *cresc.* marking is present in the second measure.

Handwritten musical score for the second system. The treble clef staff continues the melodic line with triplets and a fermata. The bass clef staff continues the accompaniment. *cresc.* markings are present in the first and third measures.

Handwritten musical score for the third system. The treble clef staff features a five-measure rest in the first measure, followed by melodic phrases. The bass clef staff continues the accompaniment. *ff* dynamic marking is present. *Ped* markings are written below the bass staff.

Handwritten musical score for the fourth system. The treble clef staff shows melodic lines with triplets and a fermata. The bass clef staff continues the accompaniment. *poco rit.* marking is present. *dim.* marking is present in the second measure. *Ped* markings are written below the bass staff.

Handwritten musical score for the fifth system. The treble clef staff concludes the melodic line. The bass clef staff continues the accompaniment. *Ped* markings are written below the bass staff.

Handwritten musical score on a grand staff. The top staff is a treble clef with a melodic line. The middle staff is a bass clef with a piano accompaniment. The bottom staff is a guitar staff with chord diagrams and fret numbers. The score includes various musical notations such as notes, rests, slurs, and dynamic markings like *pp*. There are also handwritten annotations like "Ped" and asterisks. The piece concludes with a double bar line and a fermata.

2'15"

Corale

3/2 = 60

Handwritten musical notation for the first system. It consists of two staves. The upper staff has a treble clef and the lower staff has a bass clef. The music features chords and melodic lines with various dynamics: *p*, *mf*, *f*, and *dim.*. There are also some markings like *X* and *r*.

(con Ped.)

Handwritten musical notation for the second system. It consists of two staves. The upper staff has a treble clef and the lower staff has a bass clef. The music features chords and melodic lines with various dynamics: *pp*, *p*, and *mf*. There are also markings like *X* and *r*. Above the first few measures, there are markings "4]" and "3]".

Handwritten musical notation for the third system. It consists of two staves. The upper staff has a treble clef and the lower staff has a bass clef. The music features chords and melodic lines with various dynamics: *cresc.*, *f*, and *dim.*. There are also markings like *X* and *r*. Above the first few measures, there are markings "3" and "3".

Ped Ped Ped Ped *

Handwritten musical notation for the fourth system. It consists of two staves. The upper staff has a treble clef and the lower staff has a bass clef. The music features chords and melodic lines with various dynamics: *mf*, *f*, *dim.*, and *pp*. There are also markings like *X* and *r*. Below the lower staff, there are markings "8" and "8".

(con Ped.)

Ped

Handwritten musical notation for the fifth system. It consists of two staves. The upper staff has a treble clef and the lower staff has a bass clef. The music features chords and melodic lines with various dynamics: *ff*, *dim.*, and *pp*. There are also markings like *X* and *r*. To the right of the system, there is a marking "1'55".

* (con Ped.)

Toccata II

4/4 80

31

21

Musical notation for the first system of Toccata II, measures 1-31. The system consists of two staves. The upper staff contains the melody, and the lower staff contains the accompaniment. The key signature has one sharp (F#) and the time signature is 4/4. The tempo is marked 80. The first measure is marked *P*. The melody features a series of eighth notes with slurs and accents. The accompaniment consists of eighth notes. The system ends with a *cresc.* marking and a *mf* dynamic.

31

41

75

Musical notation for the second system of Toccata II, measures 31-75. The system consists of two staves. The upper staff contains the melody, and the lower staff contains the accompaniment. The key signature has one sharp (F#) and the time signature is 4/4. The first measure is marked *P*. The melody features a series of eighth notes with slurs and accents. The accompaniment consists of eighth notes. The system ends with a *cresc.* marking and a *f* dynamic.

21

31

41

75

Musical notation for the third system of Toccata II, measures 21-75. The system consists of two staves. The upper staff contains the melody, and the lower staff contains the accompaniment. The key signature has one sharp (F#) and the time signature is 4/4. The first measure is marked *f*. The melody features a series of eighth notes with slurs and accents. The accompaniment consists of eighth notes. The system ends with a *cresc.* marking and a *ff* dynamic.

31

21

8

31

Musical notation for the fourth system of Toccata II, measures 31-75. The system consists of two staves. The upper staff contains the melody, and the lower staff contains the accompaniment. The key signature has one sharp (F#) and the time signature is 4/4. The first measure is marked *pp*. The melody features a series of eighth notes with slurs and accents. The accompaniment consists of eighth notes. The system ends with a *Ped ** marking and a *P* dynamic.

41

cresc.

21

Musical notation for the fifth system of Toccata II, measures 41-75. The system consists of two staves. The upper staff contains the melody, and the lower staff contains the accompaniment. The key signature has one sharp (F#) and the time signature is 4/4. The first measure is marked *f*. The melody features a series of eighth notes with slurs and accents. The accompaniment consists of eighth notes. The system ends with a *din.* marking and a *P* dynamic.

5♩ 4♩ 3♩ 2♩

3♩ 9♩ 3♩

2♩ 4♩

3♩ 3♩ 2♩

5♩ 9♩

Handwritten musical score for the first system. It consists of two staves. The top staff is in treble clef with a 4/4 time signature. The bottom staff is in bass clef with a 4/4 time signature. The music features complex rhythmic patterns with many beamed notes and slurs. Pedal markings are present: "Ped" with a downward arrow on the first staff, and "Ped" with an upward arrow on the second staff. A "cresc" marking is written above the second staff. The system ends with two asterisks (*).

Handwritten musical score for the second system. It consists of two staves. The top staff is in treble clef with a 4/4 time signature. The bottom staff is in bass clef with a 4/4 time signature. The music continues with complex rhythmic patterns. A "ff" marking is written above the second staff. The system ends with two asterisks (*).

Handwritten musical score for the third system. It consists of two staves. The top staff is in treble clef with a 4/4 time signature. The bottom staff is in bass clef with a 4/4 time signature. The music continues with complex rhythmic patterns. A "ff" marking is written above the second staff. The system ends with a double bar line and the time signature "1'35''".